

# 6 Wellington Place

AN **MEPC** ESTATE

39,642 sq ft available from 2021

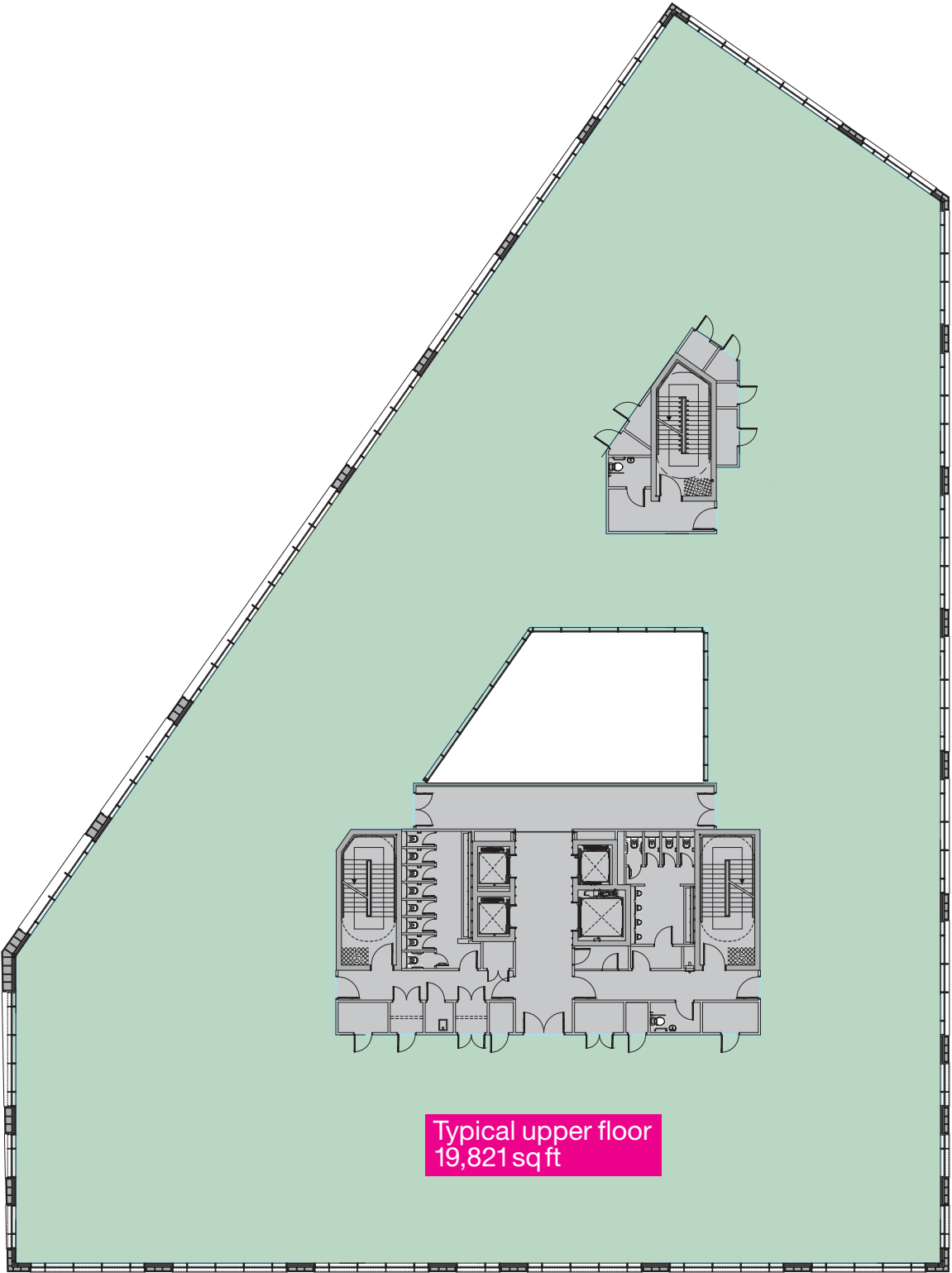


Wellington Place  
Leeds



# 6 Wellington Place

Typical upper floor



## Available from 2021

Located just minutes from major transport links and overlooking Tower Square, 6 Wellington Place offers an oasis of calm at the heart of the city.

A spacious and striking reception welcomes you into this landmark building which stands out for its high-quality finishes – both inside and out. The building also boasts open plan floorplates, meaning the space can be configured with all the flexibility modern businesses require.

With high quality retail amenities at ground floor level, 6 Wellington Place offers a welcoming environment for your staff and visitors.

## Total available 3,682 sq m /39,642sq ft

Floor	Use	sq ft	sq m	Status
Ground	Retail			Let to Netpremacy, L1 Performance Good Luck Club, Mad Frans Cafe
First	Office			Let to Equifax
Second*	Office	19,821	1,841	Available to let from 2021
Third*	Office	19,821	1,841	Available to let from 2021
Fourth	Office			Let to Squire Patton Boggs
Fifth	Office			Let to Squire Patton Boggs
Total available		39,642	3,682	

Basement car parking is available at a ratio of 1 space per 1,652 sq ft

\*Floors capable of subdivision

Join our business community,  
Call **0113 389 9830** or visit **[wellingtonplace.co.uk](http://wellingtonplace.co.uk)**

# 6 Wellington Place

MEPC Wellington Place  
3 Wellington Place, Leeds  
West Yorkshire, LS1 4AP

**Misrepresentation Act 1967**

At the time of publishing the contents of this publication were believed to be correct but cannot be guaranteed and are expressly excluded from any contract.

Printed November 2019.



jeff.pearey@eu.jll.com  
Clem.McDowell@eu.jll.com



PFairhurst@savills.com  
PCarter@savills.com